



**IMPORTANT**

1. Always include complete heater model and serial number so that any specification change can be considered for parts shipment. It can save time and expense.
2. Specifications are subject to change without notice.
3. We reserve the right to substitute functional replacements.
4. Order by Part No.; not Heater Option Designation.

**Replacement Parts**

**Applies to: Separated-Combustion Models SC, SCE, SSCBL, SSCDBL**

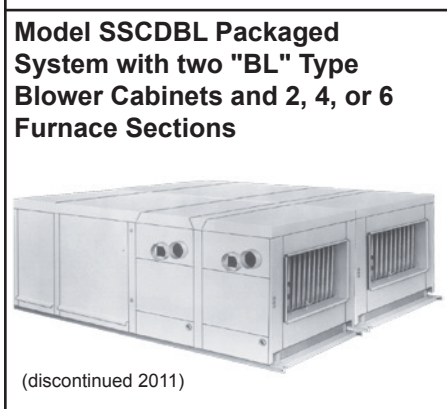
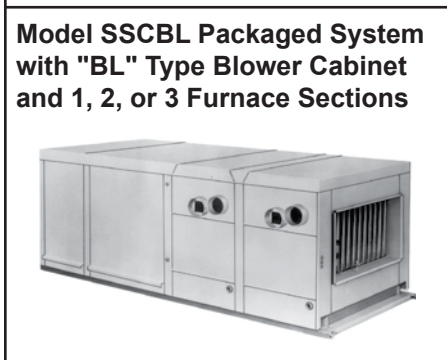
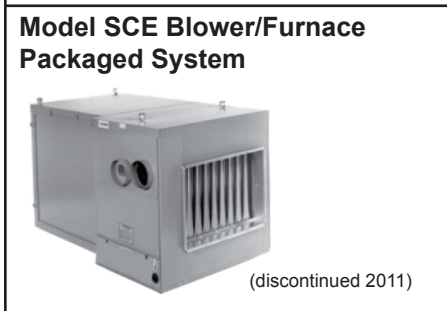


**Index**

- A**  
 Air Shutter (burner rack) 11  
 Blower Air Flow Switch 5  
 Alarm Bell 12  
 Amplifiers 6
- B**  
 Heat Exchanger Tube Baffles 10  
 Bearing Mounting 30  
 Bearings 28  
 Belt 20, 21, 22, 24, 25  
 Motor Mounting Bolts 30  
**Burner Rack and Components 10**
- C**  
 Blower Cabinet Parts 27  
 Interior Cabinet Parts 9  
 Cabinet Parts 26, 28  
 Exhaust Cap 3  
 Inlet Air Cap 3  
 Capacitor 9  
 Carryover 10  
 Carryover Regulator 11  
 Combustion Air Pressure Switch 5  
 Concentric Adapter Assy 3  
 Condensate Drain Kit 26  
 Motor Contactor 6  
 Mixed Air Controller 32  
 Outside Air Controller 32
- D**  
 Damper Motor 31  
 Damper Rod 31  
 Dampers and Controls 31  
 Date of Manufacture 2  
 Date Series was Introduced or Re-certified 3  
 DDC (4-20 ma) interface module 32  
 Disconnect Switch 7  
 Drive Options and Components 20  
 Ductstat 5  
 Ductstat Sensor 5
- E**  
 Electrical Components 4  
 Screened Exhaust Cap 3
- F**  
 Rubber Feet and Hardware (blower motor) 28

- Filters 27, 30  
 Firestat 5  
 Flue Collection Box 9  
 Freezestat 5  
 Frequency Drives 17  
 Fuse 6  
 Fuseholder 6
- G**  
 Grommet 26  
 Inlet Guard 3
- H**  
 Hand Quadrant 32  
**Heat Exchanger 9**  
 Heat Exchanger Directional Air Baffles 9
- I**  
**Ignition Controllers 5**
- L**  
 Door Latch Kit 29  
 Light 8  
**Reverse Flow Limit 6**  
**Limit Control 4**  
 Damper Linkage Parts 32  
 Louvers 26
- M**  
 Special Manifold Components 12  
**Manifold 11**  
 Blower Motor 13, 14, 15, 16, 17, 18, 19, 20  
 Damper Motor 31  
 Gear Motor 9  
 Motor Adjustment Bracket 28  
 Motor Support 28, 29  
 Mounting Support 26
- O**  
 Burner Orifices 10  
 Convenience Outlet 6  
 Overload 14, 16  
 Overloads 17
- P**  
 Paint 26  
 Replacement Parts Tag 3  
**Pilots 12**  
**Pressure switch 5**  
 Low Gas Pressure Switch 12  
 Pressure Null Switch 32  
 Dirty Filter Pressure Switch 7  
 High Gas Pressure Switch 6, 12

- Low Gas Pressure Switch 6  
 Pulley 20, 21, 22, 24, 25
- R**  
 Rating Plate 2  
 2-Speed Motor Speed Selector Relay 6  
 Relay 4, 9, 12  
 Remote Console 7
- S**  
 Discharge Sensor for Modulating Gas 6  
 Air Flow Switch Sensor 30  
 Serial Number 2  
 Blower Shaft 28  
 Signal Conditioner 6  
 Silicone Sealant 3  
 Starter 14  
 Holding Coils for IEC Starters 17  
 Starters 13, 14, 15, 16, 17, 18, 19, 20  
 Summer/Winter Switch 5  
 Toggle Switches 7  
 Auxiliary End Switch 32  
 Gas Pressure Switch 6  
 Switch 8
- T**  
 Temperature Control 6  
 Temperature Selectors 6  
 Terminal Block 4  
 Thermostats 7  
**Transformer 4, 7, 13**
- V**  
 Fluid Power Valve 13  
 Gas Valve 10  
 Manual Gas Valves 11  
 Variable Frequency Drives 13  
 Venter and Flue Duct Parts 8  
**Venter Motor and Wheel 8**  
 Vent Limiter 6  
 Vent Terminal/Combustion Air Intake Components 3  
 Vent Valve 13



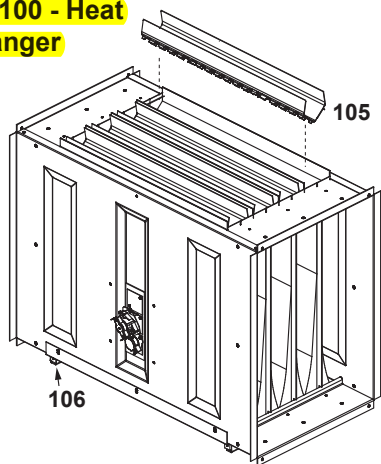
**Additional References:**

(See your factory distributor for the following catalogs and instruction manuals)

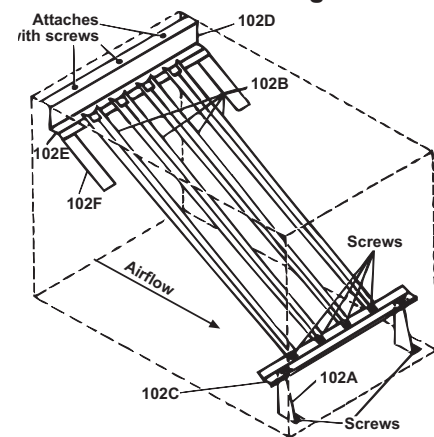
<b>Subject</b> .....	<b>Form</b>
Service - Replacement Gas Valves, Ignition Controllers & Maxitrol Parts.....	P-VALVES
Service - Converting to Other Gases.....	P-GC
Service - Replacement Parts for Optional Evaporative Cooling Module.....	P-REC
Installation/Operation - Model Series SC, Duct Furnace.....	I-SC
Installation/Operation - Model Series SCE Packaged Duct Furnace/Blower.....	I-SCE
Installation/Operation - Model Series SSCBL and SSCDBL Packaged Systems.....	I-SSCBL
Installation/Operation - Vent Terminal/Combustion Air Packages.....	I-OPT-VC
Installation/Operation - Optional Evaporative Cooling Modules.....	I-OPT-EC

**Heat Exchanger (cont'd)**

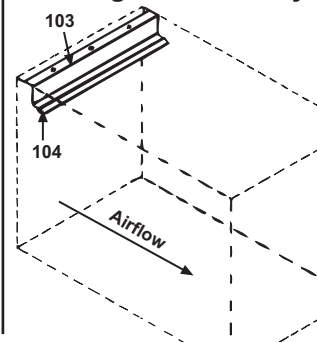
**Code 100 - Heat Exchanger**



**Code 102 - Heat Exchanger Baffle Assy**



**Heat Exchanger Baffle in Model HSC and Model SSCBL discharge furnace only**



Code	Description	SSCBL								
		SC, SCE	100	125	150/175	200/225	250/300	350	400	
100	Heat Exchanger for SC, SCE, SSCBL (replacement gaskets, Code 101, required)	Aluminized Steel	1	44301	44304	44307	44310	44313	44316	44319
		409 Stainless Steel	1	44302	44305	44308	44311	44314	44317	44320
		321 Stainless Steel	1	44303	44306	44309	44312	44315	44318	44321
101	Heat Exchanger Gaskets for SC, SCE, and SSCBL (required w/replacement heat exchanger)		2	62921				62932		
102	Heat Exchanger Baffle Assembly		1	55094	55095	55096	55097	55098	55099	55100
102A	Finger Baffle Support Bracket		>	(2)	(2)	(2)	(2)	(4)	(4)	(4)
102B	Finger Baffle		>	(3)	(4)	(6)	(8)	(11)	(13)	(15)
102C	Bottom Baffle Support		1	46478	46484	46489	46494	46499	46504	46509
102D	Rear Top Baffle Support		1	55103	55104	55106	55108	55110	55112	55114
102E	Rear Top Baffle		1	55116	55117	55119	55121	55123	55125	55127
102F	Side Finger Baffle		2	55128	55128	55128	55128	55128	55128	55128
103	Rear Top Baffle Support	All HSC & SSCBL	1	55103	55104	55106	55108	55110	55112	55114
104	Rear Top Baffle	discharge unit only	1	55228	55229	55231	55233	55235	55237	55239
105	Heat Exchanger Tube Baffles ("V" with Turbulators)			(4)	(5)	(7)	(9)	(12)	(14)	(16)
106	Burner Rack Slide Rail		2	9897	9857	9819	9781	9745	9709	9517

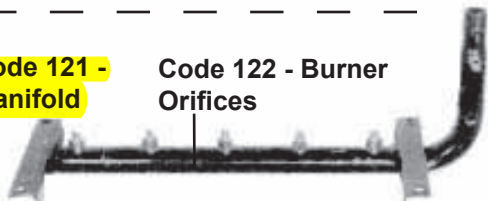
**Burner Rack and Components** - Applies to all Furnaces (one per furnace section)

**Code 110 - Burner Rack**

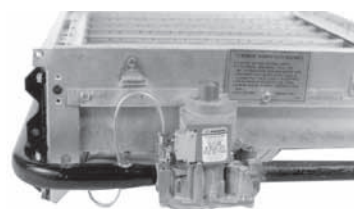


**Code 121 - Manifold**

**Code 122 - Burner Orifices**

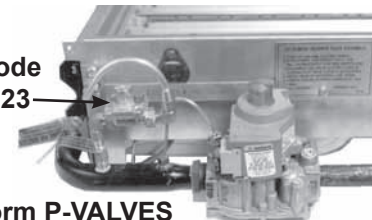


**Series 6 Natural Gas Burner Rack with two flash carryovers (one on each end) Gas Valve - See Form P-VALVES**



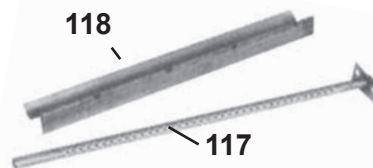
**Series 6 Propane Gas Burner Rack with air shutters and a regulated carryover with carryover tube and drip shield. (has a flash carryover on the end opposite the orifices)**

**Code 123**



**Gas Valve - See Form P-VALVES**

**Codes 117 and 118 - Carryover Tube and Drip Shield for Burner Rack**



SSCBL		500	600	700/1050	400/800/1200						
SC/SCE		100	125	150	175	200	225	250	300	350	400
	Qty	4	5	7	7	9	9	12	12	14	16
Natural Gas	P/N	11792	84437	11833	84437	11828	84437	11833	84437	84437	84437
	Drill	#41	#42	#44	#42	#43	#42	#44	#42	#42	#42
Propane	P/N	61652	61652	11830	61652	11830	61652	11830	61652	61652	61652
	Drill	1.45 MM	1.45 MM	#55	1.45 MM	#55	1.45 MM	#55	1.45 MM	1.45 MM	1.45 MM